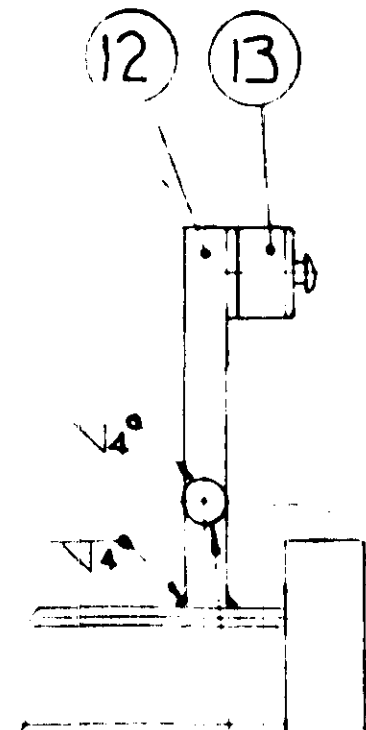
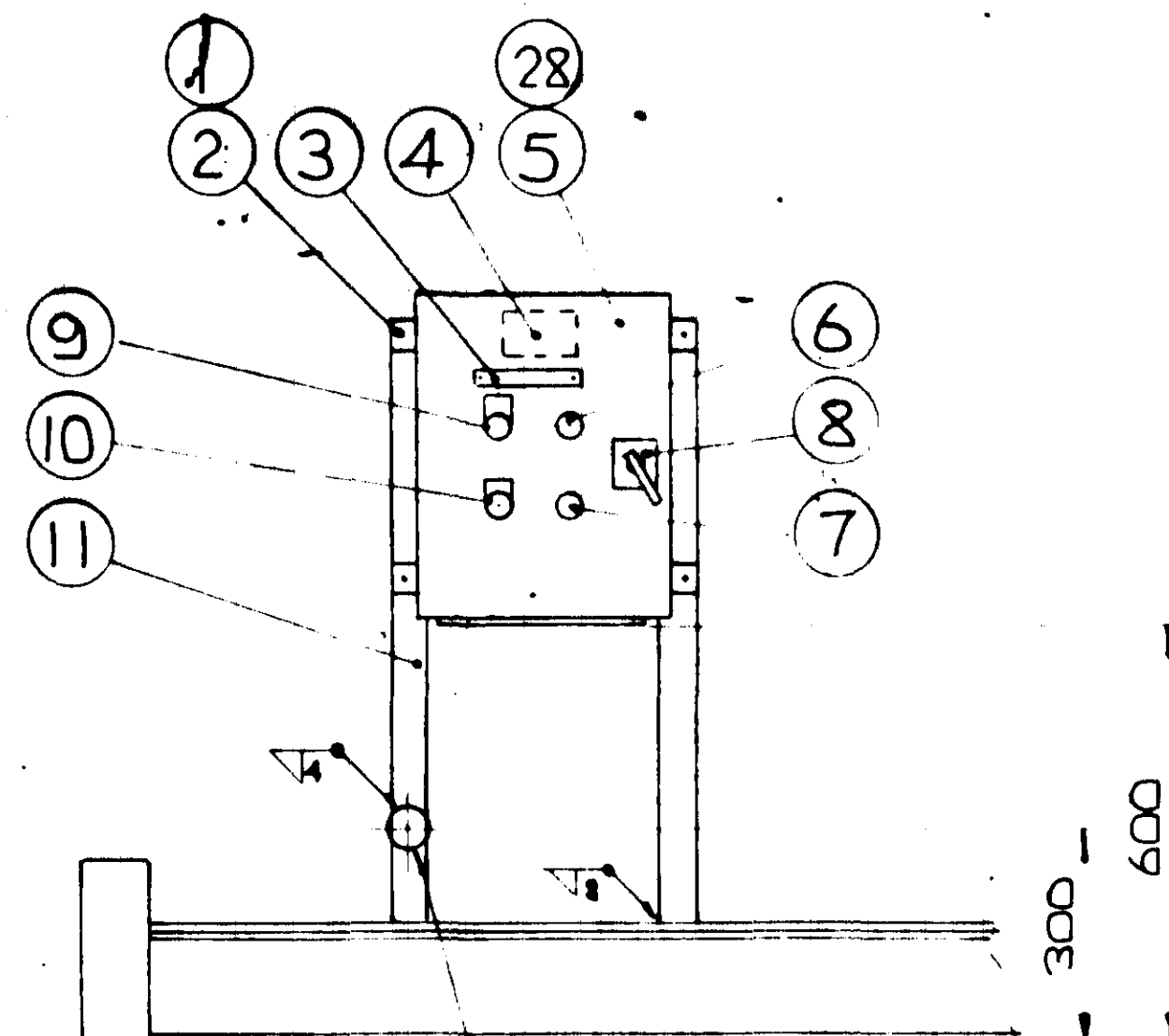


NOTES:-

1. ALL CABLES TO BE SUPPORTED ON GALVANISED TRAY.
2. CABLE ENTRIES BY GILKES TO BE ON SIDES OR BACK OF TERMINAL BOX. BOTTOM GLAND PLATE FOR CUSTOMER USE.
3. WIRING DIAGRAM 42871-492

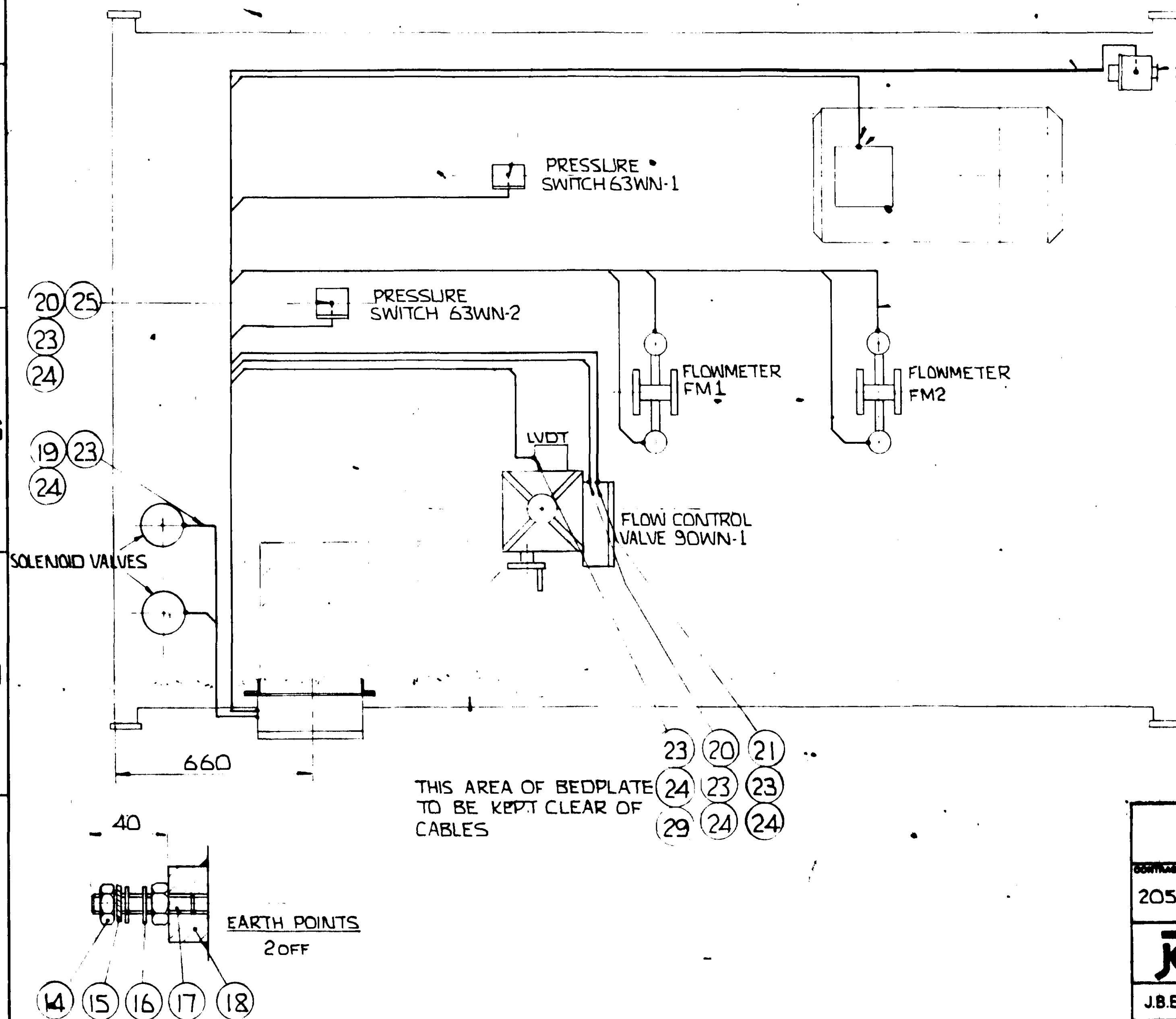
PARTS LIST

ITEM	CODE No.	DESCRIPTION	Q	MATL.
1	22862-076	HX.HD.SCREW M8x1.25x25	4	Gr 8-8
2	22888-006	HX. NUT PHILIDAS M8x1.25	4	Gr 8
3	17634	LABELS	SET	TRAFALYTE
4		ANTI-COND. HEATER 110V/20W	1	
5		TERMINAL BOX TB2EX	1	KUIPPON
6		RUNNING LAMP 'RED'	1	TRANS LAMP 22 SERIES 22
7		TRIPPED LAMP 'AMBER'	1	
8		ISOLATOR 2 POLE 16 AMP	1	MTB21
9		START PUSHBUTTON 'GREEN'	1	TRANS LAMP 22 SERIES 22
10		STOP PUSHBUTTON 'RED'	1	
11	1123-011	50x50x8 ANGLE SUPPORT	2	MS
12	3858-641	SWITCH BRACKET	1	
13		EMERGENCY STOP	1	TRANS LAMP 22 SERIES 22
14		NUT M12x1.75	4	BRASS
15		SHAKEPROOF WASHER M12	2	
16		PLAIN WASHER M12	4	
17		STUD M12x1.75x55	2	
18	3341-143	EARTH BOSS	2	MS
19	1346-522	CABLE 2 CORE 2.5 MM	13M	300/500V PVC/SWA/PVC
20	1346-562	CABLE 4 CORE 2.5 MM	20M	
21	1346-542	CABLE 3 CORE 2.5 MM	6M	
22		CABLE SINGLE PAIR 3 CORE	30M	300/500V PVC/SWA/PVC
23	2817-803	GLAND 20MM FINE 72171-52	18	BRASS
24	2817-811	GLAND SHROUD 20MM 67218-02	28	PVC
25		ADAPTOR 1/2 NPT ML x 20MM FEM.	2	BRASS
26		ADAPTOR 1 NPT ML x 20MM FEM.	4	
27	2816-402	TERMINAL SAK2-5	63	
28		GLAND 20MM FEM	10	
29		CABLE TWIN PAIR SCREENED 1.5MM	3M	300/500V PVC/SWA/PVC



EARTH BOSS

EARTH BOSS



EMERGENCY STOP

MOTOR ANTI-COND. HEATER

PRESSURE SWITCH 63WN-1

PRESSURE SWITCH 63WN-2

FLOWMETER FM1

FLOWMETER FM2

LVDT

FLOW CONTROL VALVE 90WN-1

SOLENOID VALVES

660

40

THIS AREA OF BEDPLATE TO BE KEPT CLEAR OF CABLES

EARTH POINTS 2 OFF

JOHN BROWN			
J.B.E. ORDER NUMBER 0744837			
J.B.E. DRAWING NUMBER 0598-7740-002 Rev 1			

MOD No. 1	DATE 26.3.91	SCALE 1:10	DRG. No. 42871-493
TITLE: NOX CONTROL - WATER INJECTION SKID ELECTRICAL ASSEMBLY		GILKES	
DRAWN BY: ACC 11-7-90		GILBERT GILKES & GORDON LTD LONDON ENGLAND	